

MAYFIELD DEVELOPMENT NEWS



Edition 1



Our existing Secondary and PMLD building that looks out to Moor Lane, Torquay

Torbay Council approve significant investment

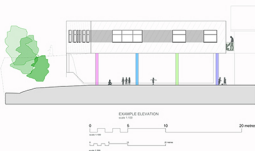
Dear parents, staff, friends and neighbours,

We wish to share some exciting news and have created an exclusive newsletter to keep you well informed and included in our upcoming project to facilitate a much needed expansion and remodelling.

All about Mayfield

Mayfield School opened in September 2002 providing 100 places for children aged 2-19 with Severe Learning Difficulties (SLD), Profound Multiple Learning Difficulties (PMLD), Autism and Physical Difficulties (PD). The building was extended in 2013 increasing the school's capacity by 50 places to 150. However, the school now has 178 pupils on roll at this site with 188 pupils expected for September 2021. This takes it to 28 over capacity with numbers expected to increase by one further class in 2021.

In order to meet the current demand for specialist school places the Council has agreed to fund the expansion of our main site, Mayfield School, Moor Lane, Watcombe, Torquay.



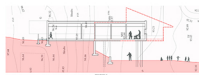
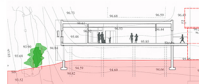
Proposed elavation of the development to extend to the left of the building above



The new build and refurbishment of the main school will provide sufficient space to accommodate current and future demand.

What will this mean for the school?

In order to accommodate current demand on the Torquay site, specialist teaching and resource areas have been used as classrooms. The proposal is to provide a new standalone building on site and refurbish areas of the main school building.



Is there enough space on site for the proposed work?

Following a feasibility study of the school site, it was agreed that a new building would be provided with areas of the existing accommodation moved to the new build. The vacated areas will then be refurbished and bought back into use. The new build will occupy unused space on the school site.

Will the works affect my child's education?

Careful consideration will be given to phasing of the works to ensure minimal disruption to the school day. Any works likely to cause disruption will be planned for school holiday periods.

Timeline

Nov 20 - Feb 21
Feasibility and Surveying Phase - COMPLETED

Feb 21 - May 21
Planning Phase - COMMENCED

May 21 - July 21
Detailed design and Tendering Phase

Aug 21 - June 22
Build Phase

June 22
Completion Phase



Scan the QR code to visit our Premises Development section of our website

School Contact:

Adam Tapp - School Business Manager
atapp@mayfieldtorbay.org
01803 328375

Project Team Contact:

Nicola Bovey - Schools Capital & Planning Officer
educationteam@tda.uk.net

